

SV-R-L

LOUVRE

SIZES

1090 x 1090 mm or 1290 x 1310 mm

FREE AREA

1 m² or 1.5 m² (depending on vent size)



DESCRIPTION

SV-R-L is a highly-efficient, attractive, low profile louvred smoke and natural ventilator which has been specifically designed for both smoke and heat exhaust and natural ventilation applications. SV-R-L can be roof mounted for exhaust or air inlet. The system offers effective fire safety with units tested for use as smoke ventilators to BS EN 12101-2.

High efficiency - aerodynamically tested to BS EN 12101-2:2003.

Weatherproof - its resistance to air leakage and rainwater is tested to BS 5368 and BS 6375.

Durability - tested to withstand wind loads of class WL1500 and snow loads of up to class SL500 under BS EN 12101-2:2003.

The ventilator is supplied in two parts to facilitate easy installation on site, the base assembly and louvre box assembly. Turndown Base - mounting onto weathered roof upstand.

ROOF TYPES



APPLICATION



COMFORT
VENTILATION



SMOKE
VENTILATION

CERTIFICATION

Certified and tested in accordance to EN 12101-2



TECHNICAL DATA

Frame	1.5 mm press formed aluminium
Blades	1.5 mm single skin aluminium.
Geometric Free Area	1 m ² or 1.5 m ² (depending on vent size).
U Value	6W/m ² °k
Voltage	24V DC
Opening Speed	> 60 secs
Current Consumption	0.6 A
Colour	Mill Finish or custom RAL colour
Certification	EN 12101-2
Delivery Includes	1 x Vent & 1 x Actuator
Cable Dimensions	3-Core

PARTS CODES

SV-R-L-1090X1090	-	AOV Roof Louvre 1090 x 1090 mm 1 m ²
SV-R-L-1290X1310	-	AOV Roof Louvre 1290 x 1310 mm 1.5 m ²

CONTROLS



WSC 204
AOV Control Unit



WSK 320
Override Switch

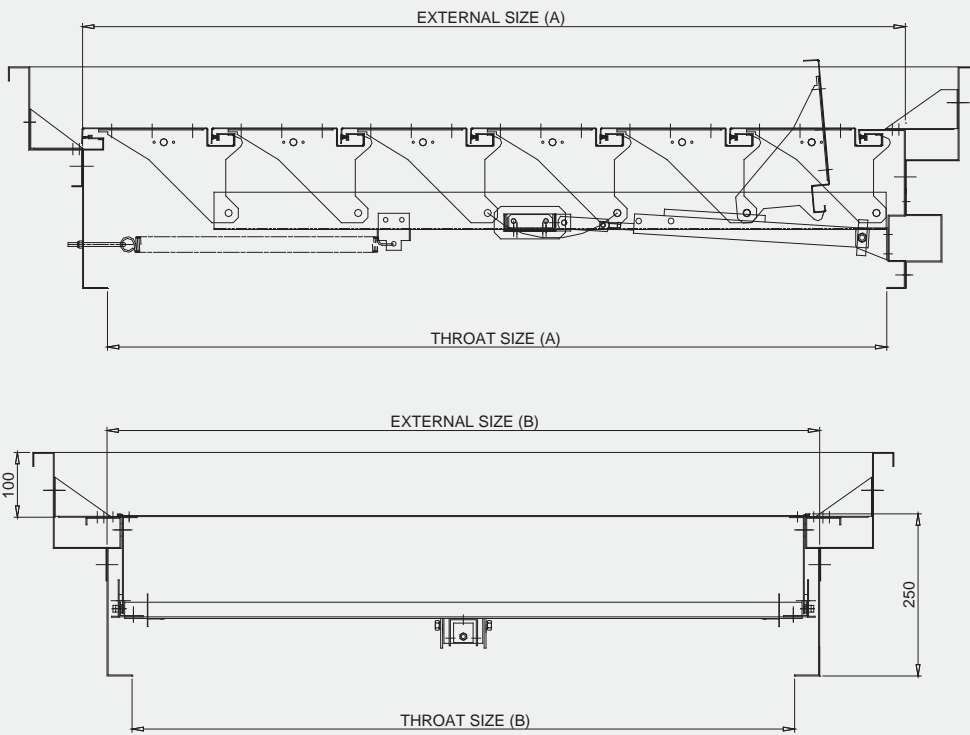


SSR-D
Smoke Sensor



WLA 330
Wind & Rain Sensor

DIMENSIONS



Part Code	A (Throat size)	B (Throat size)	A (External kerb size)	B (External kerb size)
SV-R-L-1090X1010	1090 mm	1010 mm	1270 mm	1100 mm
SV-R-L-1290X1310	1290 mm	1310 mm	1470 mm	1400 mm

